

April showers bring May flowers! The wonderful warm breezes of spring and coming flowers are reflected in this block. It looks like we will again be making lots of half-square triangles, but no! After a little bit of prep, this block will go together fast and easy!

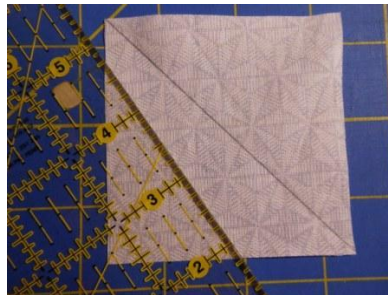


12 inch finished block

We Supply:	You Supply Flower colors:
Dark Teal: 4 3 1/2" X 6 1/2" rectangles	Any darker color: 4 3 1/2" X 6 1/2" rectangles
White: 1 3 1/2" Strip	Any coordinating pastel: 4 3 1/2 inch squares

Fabric Prep

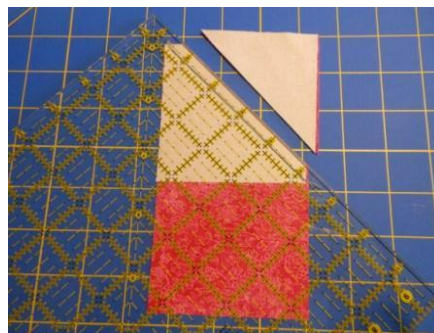
1. Cut the 3 1/2 inch strip of white into 12 squares, 3 1/2" X 3 1/2".
2. Draw a diagonal line on the wrong side of each 3 1/2" white square and your 3 1/2 inch pastel squares.



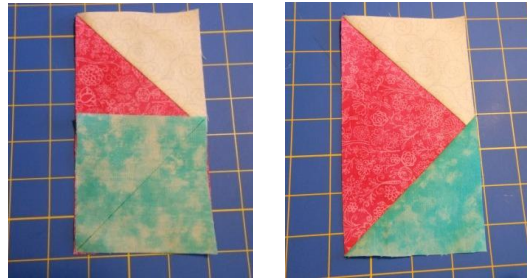
Unit 1 - Flying Geese

We will make traditional flying geese.

3. Place one white 3 1/2" square on the top of one of your darker color rectangles with right sides together and the diagonal slanting down from left to right (as shown below). Sew along the diagonal line. Hint: Sew slightly off the line toward the outer corner and the unit so the finished goose will measure a more accurate 3 1/2" X 6 1/2". Cut 1/4" away from the sewn line and press toward the corner.



- Place a pastel 3 1/2" square on the lower portion of the rectangle with rights sides together and the diagonal going down from right to left (in the opposite direction as the first diagonal -shown below). Sew along the diagonal line as described in step #3. Cut 1/4" away from the sewn line and press toward the corner.

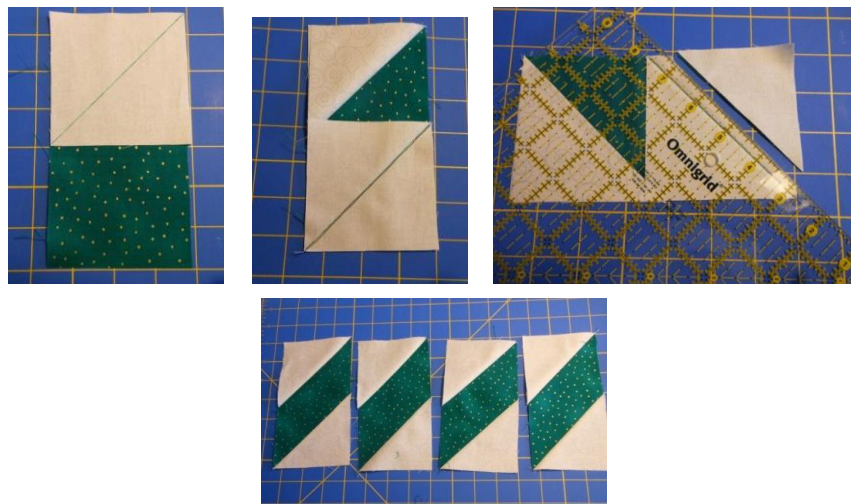


- Square up this unit to measure 6 1/2" X 3 1/2". Repeat 3 more times and place all 4 completed flying geese units to one side.



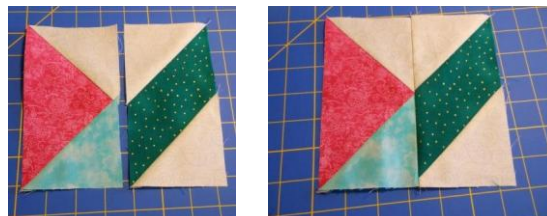
Unit 2 - Diamond Unit

- You will be doing almost the same thing as steps 3 through 5 **EXCEPT** you will use two white 3 1/2" squares and place BOTH with their diagonals slanting down from right to left. (as shown below). Sew, trim, and press. You will have 4 units.



Assembly:

- Sew one Diamond Unit and one Flying Geese Unit together as shown below. Repeat 3 more times for a total of 4 larger units. Press toward the Diamond Unit.

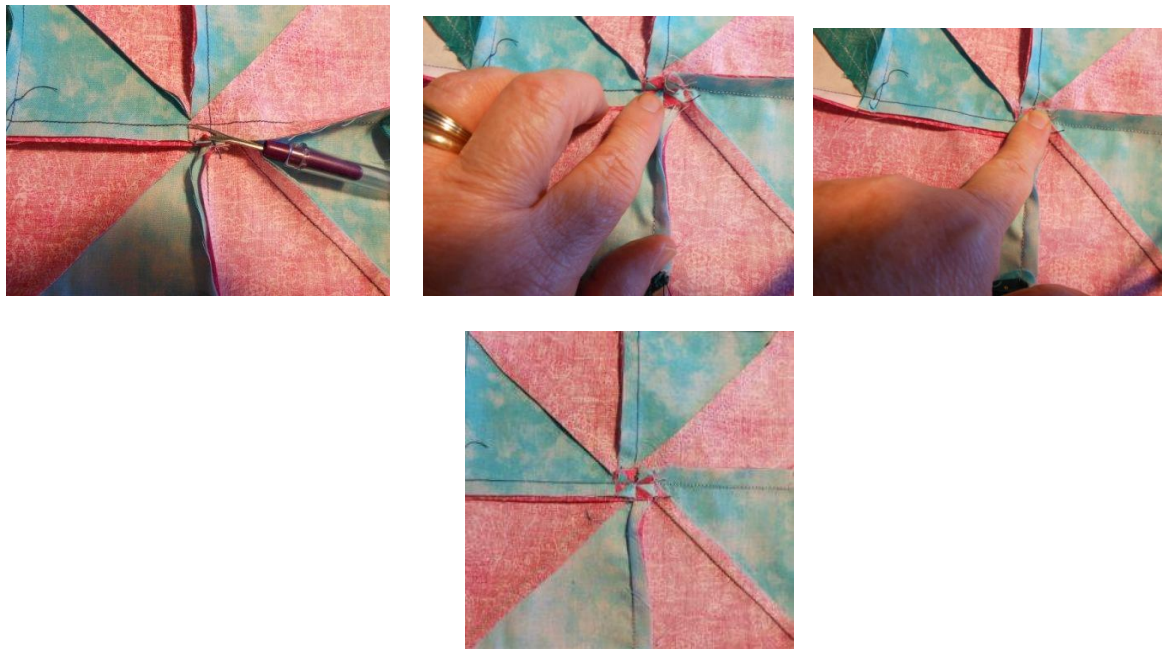


- Assemble two of the units together. Press toward the goose unit. Repeat. Then assemble these two blocks together, matching edges and midpoints carefully (as shown below).



Pressing the center of the Pinwheel: The center of the pinwheel has a lot of bulk, and in order to help it lay flat, we'll use the Eleanor Burns method of "mushing" it into submission.

- Lay your block, wrong side up, on your ironing board. Pick a few stitches out of the ends of each seam at the center of the pinwheel (within the 1/4 inch seam allowance). Push the seams on the left and right of the center toward the Goose Unit. The center will pop open and make a little pinwheel. "Mush" this down with your finger to open it further, then press.



You are done! Your block should measure 12 1/2" square.

Here's a possible layout. Check out the secondary pattern!! Doesn't it look like a flower garden?

